

Report # : 021752098

Date: 6/24/02

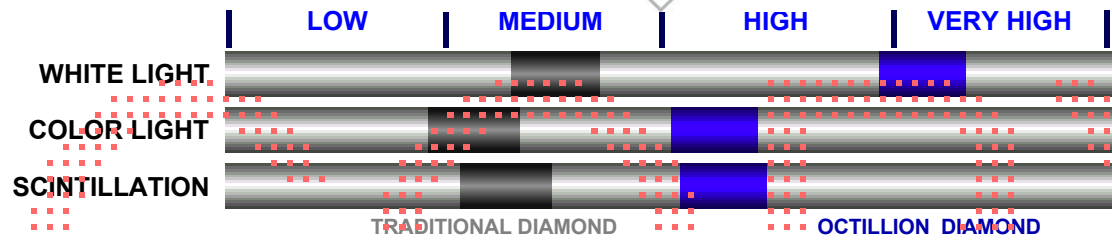
Diamond ID #

ZR002098



Light Performance Analysis

A Report of Your Diamonds Return of Light



BrillianceScope™

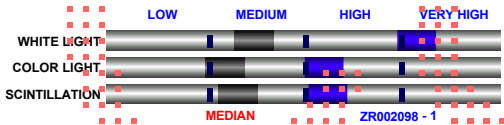
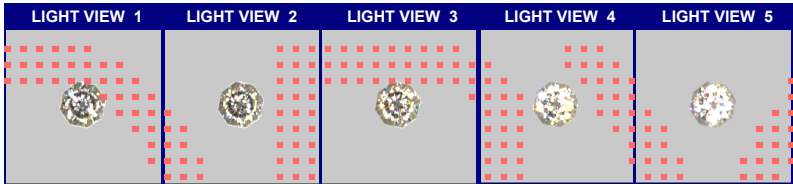
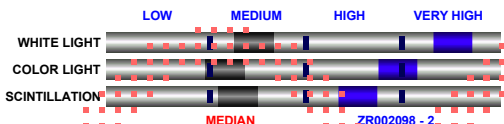
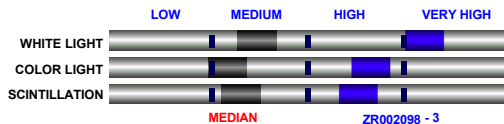
OCTILLION

TRADITIONAL

	LIGHT VIEW 1	LIGHT VIEW 2	LIGHT VIEW 3	LIGHT VIEW 4	LIGHT VIEW 5
OCTILLION					
TRADITIONAL					

This comparative analysis verifies the amount of light returned from a sample commercial diamond and the diamond measured in this Report. The BrillianceScope™ measures diamonds in a controlled lighting environment consisting of 5 light views.

The diamond shown is a representative diamond in the set. See back for results on each diamond. The TRADITIONAL diamond shown is a standard round 58 facet diamond of H-I S12 color and clarity. IMPORTANT INFORMATION: Limitations, Definitions, Phone Numbers and Addresses on back.



The Guide is the jewelry industry's leading pricing publication for diamonds and colored gemstones. Working with GemEx Systems, Inc. the "Comparative Light Performance Evaluation Scales" which are based on the results of the BrillianceScope™ Analyzer have been developed to help consumers more easily determine the visual differences between diamonds. Results are repeatable with an accuracy range of +/- 5%. Accuracy standards have been developed and tested by GemEx Systems and The Guide.

This document is not a guaranty, valuation or appraisal. The Guide and GemEx Systems, Inc. ("The Companies") assume no liability or responsibility for the representations made by the owner/seller of this diamond. The images and light performance grades on diamonds are viewed and analyzed electronically only and as such are not guaranteed by The Companies.

The Guide is published by Gemworld International, Inc., 650 Dundee Road, Suite 465, Northbrook, IL 60062 Phone: 888-GEMGUIDE
 GemEx Systems Inc., 6040K West Executive Drive, Mequon, WI 53092 Phone: 262-242-1111. <http://www.gemex.com>

Shape: OCTILLION
 Stone ID: ZR002098